

Specification

	IS-mini 4K	IS-mini X
Input	1 x 12G-SDI	1 x 3G/HD-SDI
Output	1 x 12G-SDI 1 x 12G-SDI (Bypass) 1 x HDMI 2.0 (No audio Signal output)	1 x 3G/HD-SDI 1 x HDMI (No audio Signal output)
Interface	USB / LAN	USB / LAN
3D LUT	1D(1024 step) + 3D(26x26x26) + 1D(1024 step) Triangular Interpolation	1D(1024 step) + 3D(26x26x26) + 1D(1024 step) Triangular Interpolation
Still Image	Capture, Play, Overlay, Chroma Key	Capture, Play, Overlay, Chroma Key
Power	DC 12V	DC 5V
Dimensions	130(W) x 91(D) x 35(H)mm / 500g	103(W) x 81(D) x 29(H)mm / 260g
Supported Software	WonderLook Pro *Free License LiveGrade 3.9 or later WonderLook Simple (LUT import only)	WonderLook Pro *Free License LiveGrade 3.9 or later WonderLook Simple (LUT import only)

Line ups

License	Functions / Restrictions	Price
Free	License for One PC Connect with the IS-mini X / IS-mini 4K (up to 5units) No third party LUT Box support	Free
Standard License	License for One PC Third party LUTBOX support (up to 5units) Connect with the IS-mini X / IS-mini 4K (up to 10units)	\$300 / year
Corporate	License for 5 PC Third party LUTBOX support (Unlimited) Third party 4K/8K device support Connect with the IS-mini X / IS-mini 4K (Unlimited)	\$1,500 / year

TVlogic®

Vidente Co., Ltd. www.tvlogic.tv
E-mail. sales@tvlogic.co.kr / support@tvlogic.co.kr



WonderLook PRO

WonderLookPro(WLP) Provides Color Spaces/camera color conversion LUTs, adding various preset rendering, your own Looks by various color correction method, which are used on LUTBOX or camera in real time or saved as LUTs to be used for various systems. WLP is unrivaled solution to manage and create color and Look.

* Free for IS-mini Series Users

Supported LUT Boxes

IS-mini Series, BoxIO, teradek, ASTRO's SB Series, Varicam Series, Alexa/Amira, AJA FS-HDR

Camera Control and Metadata handling

Varicam/EVA1, Alexa/Amira can be directly controlled by WLP for Rec start/stop, WB, EI, Shutter...
Metadata can be watched and displayed on UI or OSD.

Supported Color Spaces

Rec709/Rec2020/DCI/HLG 1.2/PQ/SDR Standard Gamma, more than 70 types of camera color spaces.

Rendering Selection

ACES's RRT, Print Film Emulation, 15 Types of nega film, HLG/PQ OOTF are usable for any workflow.
Sony SLog3 / BBC HDR LUT (Paid License)

LUT Files

Import/Export any type of formats.
Input/Output color space can be converted when using.

www.tvlogic.tv



WonderLook PRO

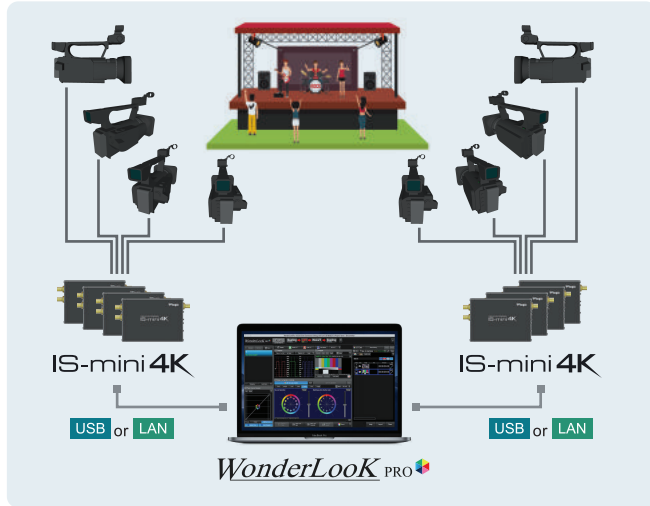
for SDR & HDR Production

TVlogic® Always ON-AIR

For Broadcasting

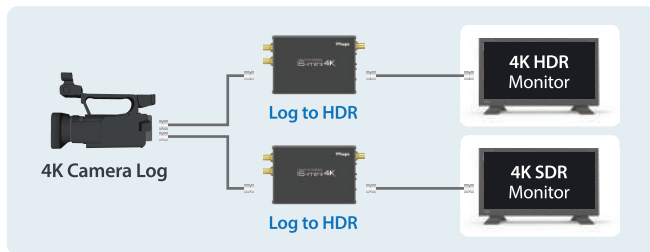
Live Event Shooting / Broadcasting

Different type of Cameras or Log cameras can be matched and be applied created Look simultaneously.

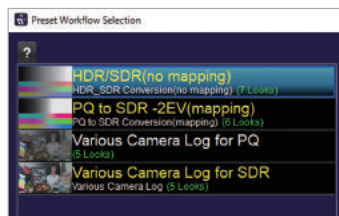


HDR/SDR Simultaneous Broadcasting

One camera log source can be converted to HDR/SDR simultaneously by just selecting parameters. Further, grading HDR/SDR can be simultaneously done, keeping visual matching.



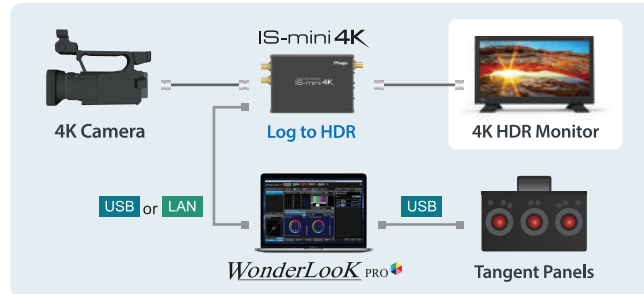
HDR/SDR Conversions



Color Space Conversion can be set just selecting parameters. Typical conversions are provided as preset conversion to be used by just one click. Further adjustment is capable for all the conversions.

For On-Set Color

4K HDR On-Set Grading



Preset LUT

Just Selecting the camera/mode and rendering gives you good starting point for on-set grading.



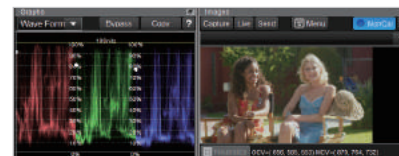
Look Management

Created Looks can be stored in groups. Look Library is available and selected Look can be adjustable.



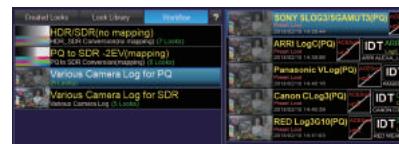
Live Viewing

Live viewing or capture image with waveform to analyze image (with IS-mini 4K)



Preset Transform

Various conversions are Provided as preset to be selected by just one click.



Color Correction

Simple but powerful color correction by mouse/Keyboard or tangent panels.



Control Panel

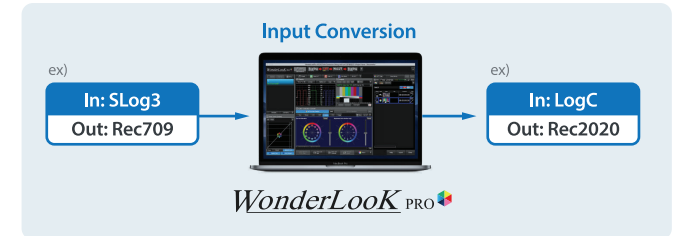
Metadata watching and camera control.



For Post Production

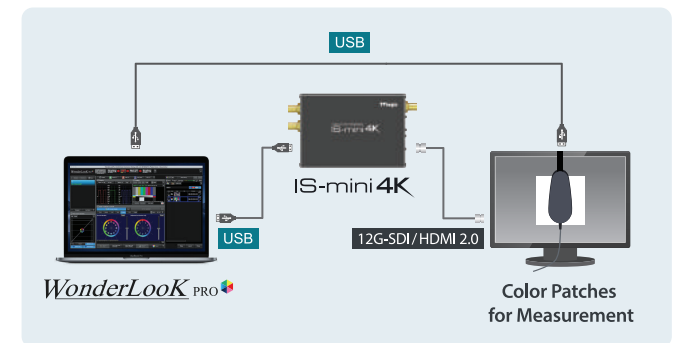
LUT Management

Existing LUTs can be easily converted for other camera input, for other output color spaces in different file format.



Monitor Calibration

Using IS-mini 4K as pattern generator, WLP can measure the monitors profile automatically and generate error compensated LUT for the monitor, which can be matched with mastering monitor.



Ultimate 4K/ HD Video
Color Processing System