

TOPRIG

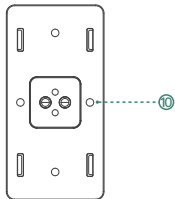
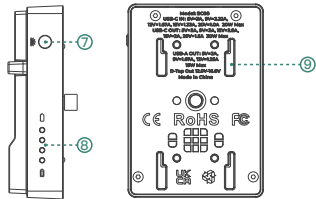
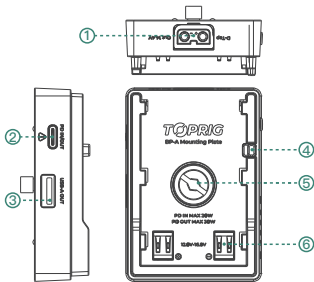
BP-A Mounting Plate BP-A 电池供电扣板

User Manual
使用说明书

一. In the Box/产品包含

1. BP-A Mounting Plate *1
BP-A 电池供电扣板 *1
2. 30cm USB-C to USB-C Cable *1
30cm USB-C to USB-C 线 *1
3. Gimbal Mounting Adapter *1
稳定器连接模块 *1

二. Quick Start/认识产品



- ① D-Tap Output/输出接口
12.0V—16.8V, 60W MAX

② USB-C Input/Output/输入/输出接口

USB-C IN/输入:

5V=3A, 9V=2.22A, 12V=1.67A, 15V=1.33A,
20V=1.0A 20W Max

USB-C OUT/输出:

5V=3A, 9V=3A, 12V=2.5A, 15V=2A,
20V=1.5A 30W Max

⚠ Note / 注意事项

When using the PD IN/OUT port of this product to power mobile devices such as mobile phones/ tablets, you need to press and hold the button for 10 seconds or re-plug the cables to turn on the power after hot swap a new battery.

当使用本产品PD IN/OUT接口为带有OTG功能的移动设备供电时,更换电池后,需重新插拔供电线或长按按键10秒以上重启供电。

③ USB-A Output/输出接口

USB-A OUT/输出:

5V=3A, 9V=1.67A, 12V=1.25A 15W Max

D-tap+USB-A+USB-C

Total Out Put 60W MAX/总输出 60W MAX

④ Battery Release Button/电池释放按键

⑤ 1/4" Screw /螺丝

⑥ BP-A Charging Connector/电池充电针脚

⑦ Power On/Off Button/开关按键

The Power On/Off Button has three functions as listed below

- Short press once-Turn on battery level display and every power output
- Short press twice-Turn off battery level display and every power output
- Long press for 10 seconds-Product reset
- 短按一次-开启电量显示, 打开各端口输出
- 短按两次-关闭电量显示, 关闭各端口输出
- 长按10秒-产品复位

⑧ Battery Level Indicator Light/电量指示灯

⑨ iPad PowerCage Mount/iPad套件连接孔

⑩ Gimbal Mounting Adapter/稳定器连接模块

Dimension/尺寸

76.7mm*54.2mm*22.6mm

Weight/重量

49g

三. Contact Us/联系我们

🌐 Website: accsoon.com

📘 Facebook: [Accsoon](https://www.facebook.com/Accsoon)

👥 Facebook Group: [Accsoon Official User Group](https://www.facebook.com/AccsoonOfficialUserGroup)

📷 Instagram: [accsoontech](https://www.instagram.com/accsoontech)

📺 YouTube: [ACCSOON](https://www.youtube.com/Accsoon)

✉ Email: support@accsoon.com



官方网站



官方客服微信



微信公众号

